

Activity Name	Original Duration	Planned Start	Planned Finish	2011				2012				2013				2014				2015				2016	
				Q3	Q4	Q1	Q2	Q3	Q4	Q1	Q2	Q3	Q4	Q1	Q2	Q3	Q4	Q1	Q2	Q3	Q4	Q1	Q2		
<b>HY/2009/15 - CWB TUNNEL (CBTS SECTION)</b>																									
<b>SUBMISSIONS COMPLYING WITH EPs</b>																									
EM&A Manual ( rely on the Master EP's submission EP-364/2009/A Condition 2.9)																									
Baseline Monitoring Report (rely on the Master EP's submission EP-364/2009 Condition 3.3)																									
Monthly EM&A (rely on the masters EP's Submission, EP-364/2009/A Condition 3.4)																									
A dedicated website (rely on the master EP's submission, EP-364/2009/A Condition 4.2)																									
Management organization of main construction companies (FEP Condition 2.6)	1d	02-Oct-10	02-Oct-10																						
Work Schedule (FEP Condition 2.7)	1d	27-Oct-10	27-Oct-10																						
Location Plan (FEP Condition 2.8)	1d	27-Oct-10	27-Oct-10																						
Noise Management plan (FEP Condition 2.9)	1d	27-Oct-10	27-Oct-10																						
Landscape plan (FEP condition 2.10)	1d	31-Jan-11	31-Jan-11																						
<b>EAST VENTILATION ADIT</b>																									
CCT @ Portion 1, 2, 4, 6, 22	1315d	27-Sep-10	03-May-14																						
EV Adit @ Portion 4-Advance Works	526d	27-Sep-10	05-Mar-12																						
EV Adit Portion 1, 2, 6, 22	26d	22-Dec-11	16-Jan-12																						
EV Adit-based on Conforming Design	323d	15-Feb-12	02-Jan-13																						
<b>TCBR1E (TS1 Area)</b>																									
Diaphragm Wall Construction (incl. SI, & tests after completion)	107d	26-Apr-11	10-Aug-11																						
Excavation & Lateral Support, ELS	99d	16-Jul-11	22-Oct-11																						
Cut & Cover Tunnel Construction (incl. backfill)	78d	22-Oct-11	07-Jan-12																						
OHVD and Cable Trough (access from Portion 22)	76d	18-Dec-13	03-Mar-14																						
<b>TCBR2 + TCBR3 (TS2 Area)</b>																									
Diaphragm Wall Construction	118d	06-Jul-12	31-Oct-12																						
Excavation & Lateral Support, ELS	248d	06-Jul-12	10-Mar-13																						
Cut & Cover Tunnel Construction	164d	11-Mar-13	21-Aug-13																						
OHVD Cable Trough (Access from Portion 22)	150d	05-Aug-13	01-Jan-14																						
<b>TCBR1W (TS4 Area)</b>																									
Diaphragm Wall Construction	148d	28-Jun-11	22-Nov-11																						
Excavation & Lateral Support, ELS	319d	26-Jun-11	11-May-12																						
Landing Steps - Demolition/Reconstruct as footpath	40d	28-Jun-11	23-Aug-11																						

- ◆ Milestone
- ◆ Milestone
- ▬ Remaining Work
- ▬ Critical Remaining Work
- ▬ Actual Work

1 of 2

**China State Construction Engineering (Hong Kong) Ltd.**

**Contract No. HY/2009/15 - Central Wan Chai By Pass - Tunnel**

**( CBTS Section)**

Prepared by William Caluza			
Date	Revision	Checked	Approved
14-Mar-11	Revision C	ST	KL
	File: GC01a		
	(Layout:HY/2009/15: CWB - Summary)		

**中國建築工程(香港)有限公司**

CHINA STATE CONSTRUCTION ENGINEERING (HONG KONG) LTD

Activity Name	Original Duration	Planned Start	Planned Finish	2011					2012				2013				2014				2015				2016		
				Q3	Q4	Q1	Q2	Q3	Q4	Q1	Q2	Q3	Q4	Q1	Q2	Q3	Q4	Q1	Q2	Q3	Q4	Q1	Q2	Q3	Q4	Q1	
Rock Excavation	238d	25-Apr-12	15-Dec-12																								
ME4-Diaphragm Wall	114d	10-May-12	19-Oct-12																								
AS Logistics Area for Mined Tunneling Works	174d	01-Jun-12	07-Feb-13																								
ME4-ELS Works	212d	01-Jun-12	02-Apr-13																								
SCL Entrusted Works	291d	18-Jul-12	08-Sep-13																								
Cut & Cover Tunnel Construction (w/o TS4 +)	111d	17-Dec-12	06-Apr-13																								
ME4-RC Structure	146d	28-Jan-13	21-Aug-13																								
OHVD and Cable Trough (Access from TZ5/TPCWAE/TPCWAW)	180d	17-Jun-13	13-Dec-13																								
<b>MINED TUNNEL</b>																											
CHT Protection Works @ location A, B, C	342d	27-Sep-10	01-Feb-12																								
Tunnel works from West Portal (access from TPCWAE& TZ5)	418d	12-Mar-12	30-Oct-13																								
Tunnel Works from East Portal (Access from TS4 Area)	214d	30-Mar-12	01-Feb-13																								
Tunnel OHVD & Cable Trough	384d	02-Dec-13	22-May-15																								
<b>TPCWAE</b>																											
Drainage Diversion works along Hung Hing Road (Portion 19)	176d	15-Oct-10	24-Jun-11																								
Diaphragm Wall Construction	147d	20-May-11	13-Oct-11																								
Excavation & Lateral Support, ELS	421d	20-May-11	13-Jul-12																								
Rock Excavation	208d	12-Mar-12	03-Oct-12																								
AS Logistics Area for Mined Tunneling works	342d	12-May-12	18-Apr-13																								
Cut & Cover Tunnel Construction	130d	28-Jan-13	06-Jun-13																								
OHVD and Cable Trough (Access from TZ5/TPCWAW)	182d	18-Feb-15	18-Aug-15																								
<b>TPCWAW &amp; PORTION 11</b>																											
Diaphragm Wall Construction + Portion 11	222d	25-Oct-13	03-Jun-14																								
Excavation & Lateral Support, ELS	478d	25-Oct-13	14-Feb-15																								
Cut & Cover Tunnel Construction	143d	30-Dec-14	21-May-15																								
OHVD and Cable Trough Installation (Access from Portion 11)	235d	22-May-15	11-Jan-16																								

- ◆ Milestone
- ◆ Milestone
- ▬ Remaining Work
- ▬ Critical Remaining Work
- ▬ Actual Work

2 of 2

**China State Construction Engineering (Hong Kong) Ltd.**

**Contract No. HY/2009/15 - Central Wan Chai By Pass - Tunnel**

**( CBTS Section )**

Prepared by William Caluza			
Date	Revision	Checked	Approved
14-Mar-11	Revision C	ST	KL
	File: 0001a		
	(Layout: HY/2009/15: CWB - Summary)		



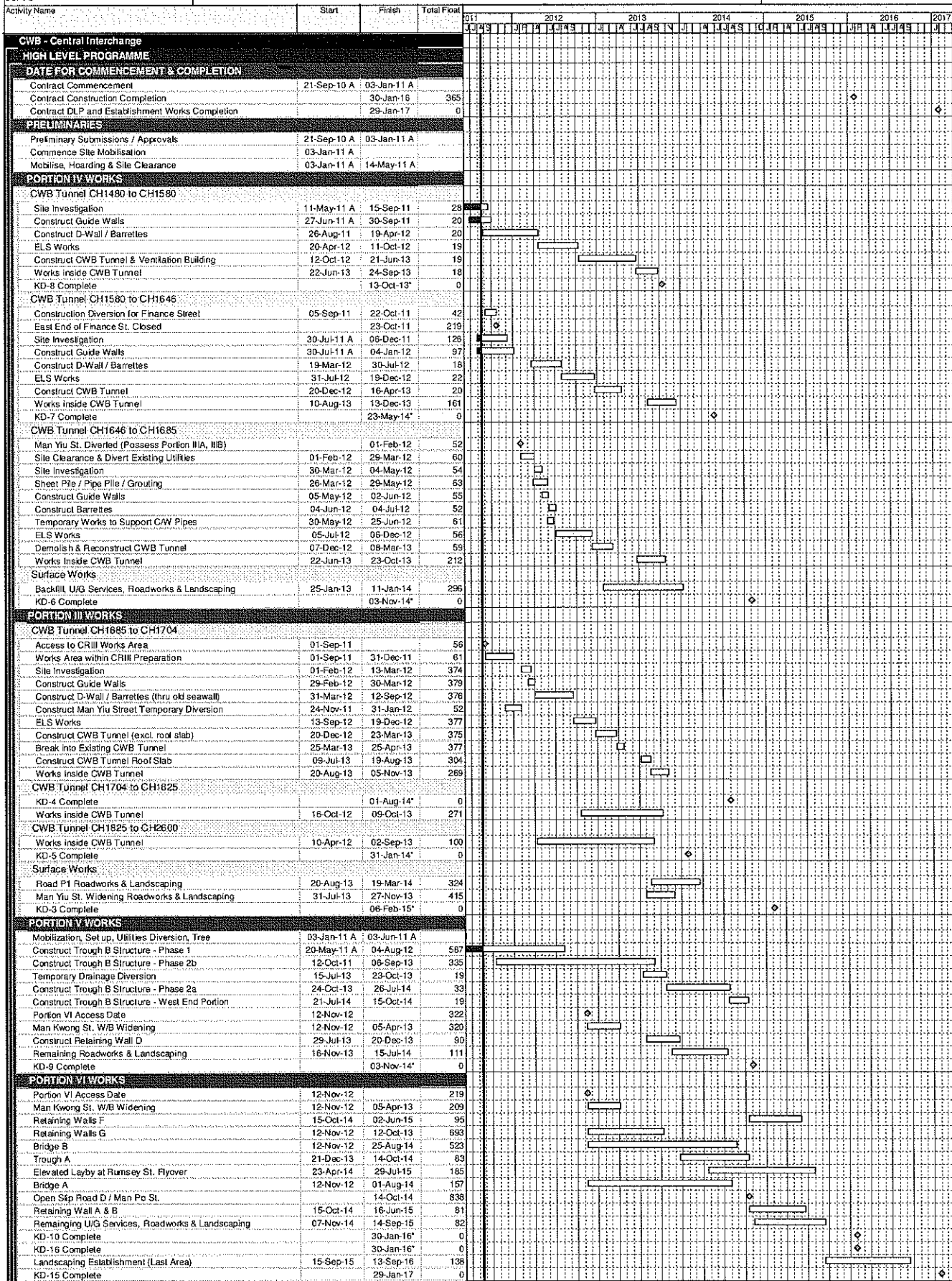




Data Date: 20-Aug-11  
 Print Date: 29-Aug-11  
 CCP3-2

HY/2009/18 Central - Wan Chai Bypass (Central Interchange)

TASK filter: HL





Data Date: 20-Apr-12  
 Print Date: 25-Apr-12

# HY/2009/18 Central - Wan Chai Bypass (Central Interchange)

TASK filters: 3 Months, Not HL.



Activity ID	Activity Name	Original Durati...	Start	Finish	Total Float	2012			
						Apr	May	Jun	Jul

**Updated 2012-04-20 CWB - Central Interchange (2011-12-23) Revised Detailed Wo...**

## PRELIMINARIES

### Access Dates & Milestones

#### Portion Possession Dates

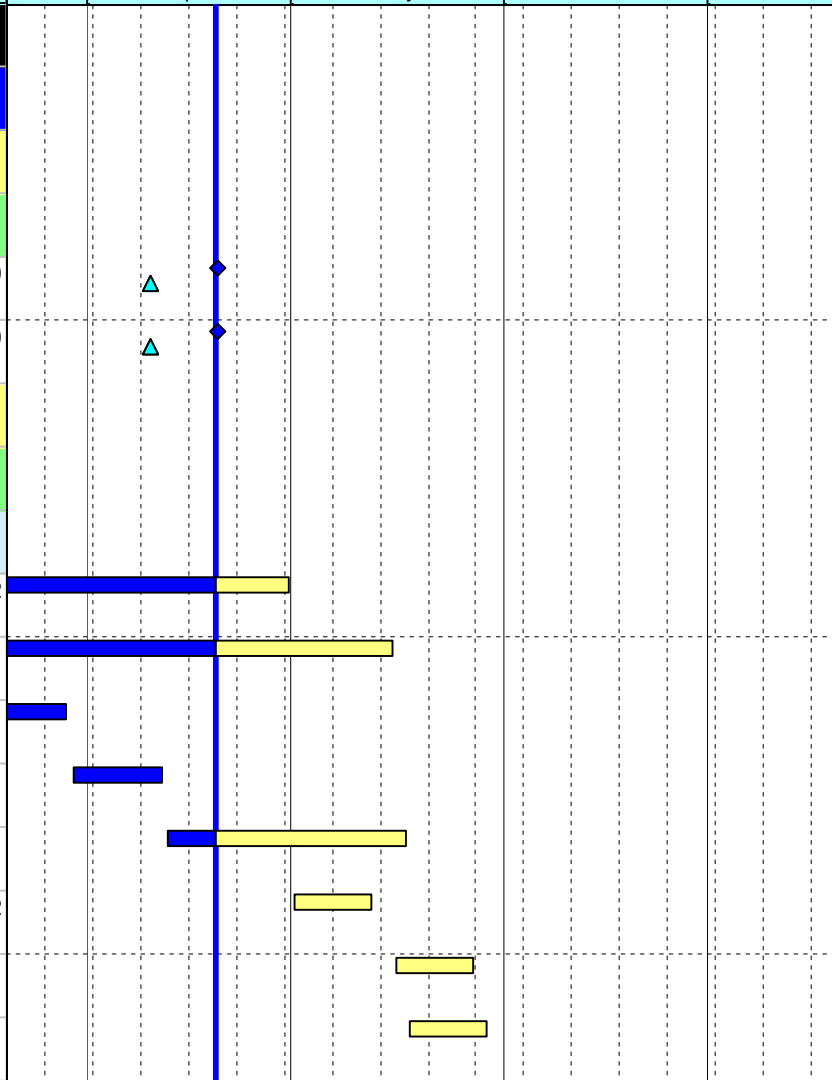
1285	Portion III B Available (DAY-567)	0	20-Apr-12*		-10				
1295	Portion III C Available (DAY-567)	0	20-Apr-12*		-10				

### Submissions & Approvals

#### Specified Plans

#### MTRC Impact Assessment Report

1558	Resubmit MTRC Impact Assessment Report - Cut & CoverTunnel	28	17-Feb-12 A	30-Apr-12	92				
1501	Resubmit MTRC Impact Assessment Report - Phase 2	12	19-Feb-12 A	15-May-12	138				
1371	Resubmit MTRC Impact Assessment Report - MYS Tunnel	28	25-Feb-12 A	29-Mar-12 A					
1534	MTRC Impact Assessment Report - Engineer / MTRC Review & Comment	12	30-Mar-12 A	12-Apr-12 A					
1535	Resubmit MTRC Impact Assessment Report - MYS Tunnel	28	13-Apr-12 A	17-May-12	121				
1559	MTRC Impact Assessment Report - Engineer / MTRC Review & Comment (Cut & Cover)	12	01-May-12	12-May-12	92				
1504	MTRC Impact Assessment Report - Engineer / MTRC Review & Comment (Phase 2)	12	16-May-12	27-May-12	138				
1553	MTRC Impact Assessment Report - Engineer / MTRC Review & Comment (MYS)	12	18-May-12	29-May-12	121				



- ◆ Current Milestone
- Critical Remaining Work
- ▬ Level of Effort
- ▬ Remaining Work
- ▲ Baseline Milestone
- ▬ Project Baseline
- ▬ Actual Work

## Leighton Contractors (Asia) Limited Programme Update 19 (Apr 2012) THREE MONTH ROLLING

Project ID: U019  
 Baseline: DCP3-3  
 Layout: Update Three Month Rolling U018  
 Page 1 of 12

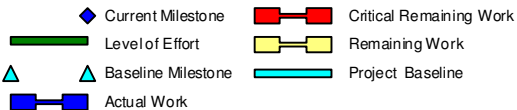
U019 Programme Update 19 (Apr 2012)			
Date	Revision	Checked	Approv...
21-Apr-12	U019	RC	DS
21-Mar-12	U018	RC	DS

# HY/2009/18 Central - Wan Chai Bypass (Central Interchange)

TASK filters: 3 Months, Not HL.



Activity ID	Activity Name	Original Durati...	Start	Finish	Total Float	2012					
						Apr	May	Jun	Jul		
<b>Traffic</b>											
<b>Temporary Traffic Management</b>											
1404	TTM - Revise & Resubmit	18	15-Mar-12 A	11-Apr-12 A							
1415	TTM - Engineer / 16th TMLG Review & Approve	19	12-Apr-12 A	18-Apr-12 A							
1416	TTM - Revise & Resubmit	18	19-Apr-12 A	07-May-12	366						
14230	TTM - Engineer / 17th TMLG Review & Approve	19	08-May-12	26-May-12	366						
14231	TTM - Revise & Resubmit	18	27-May-12	13-Jun-12	366						
<b>Utility Protection and Diversions</b>											
1191	Utilities - Coordination for Diversion - PCCW	200	03-Dec-10 A	25-Apr-12	320						
1192	Utilities - Coordination for Diversion - CATV	200	03-Dec-10 A	25-Apr-12	320						
1193	Utilities - Coordination for Diversion - HGC	200	03-Dec-10 A	25-Apr-12	320						
1194	Utilities - Coordination for Diversion - HEC	200	03-Dec-10 A	25-Apr-12	541						
1196	Utilities - Coordination for Diversion - WSD	389	03-Dec-10 A	25-Apr-12	819						
1197	Utilities - Coordination for Diversion - WT&T	200	03-Dec-10 A	25-Apr-12	320						
1198	Utilities - Coordination for Diversion - Towngas	203	03-Dec-10 A	22-Apr-12	323						
<b>Design</b>											
<b>Cost Saving Design (Contractor's Alternative Design)</b>											



## Leighton Contractors (Asia) Limited Programme Update 19 (Apr 2012) THREE MONTH ROLLING

Project ID: U019  
Baseline: DCP3-3  
Layout: Update Three Month Rolling U018  
Page 2 of 12

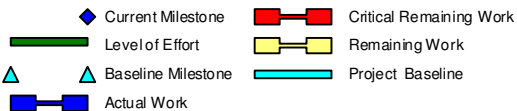
U019 Programme Update 19 (Apr 2012)			
Date	Revision	Checked	Approv...
21-Apr-12	U019	RC	DS
21-Mar-12	U018	RC	DS

## HY/2009/18 Central - Wan Chai Bypass (Central Interchange)

TASK filters: 3 Months, Not HL.



Activity ID	Activity Name	Original Durati...	Start	Finish	Total Float	2012				
						Apr	May	Jun	Jul	
3728	CSD - Engineer Review & Approve Alternative Design	28	27-Jan-11 A	25-Apr-12	1740					
<b>Temporary Works Design</b>										
<b>ELS - Approach Ramp (Trough and Retaining Walls)</b>										
1578	ELS - ELS Trough and Retaining Walls Re-Submit Design - Phase 2	12	19-Feb-12 A	15-May-12	138					
1596	ELS - Resubmit Trough Construction Method Statement	12	17-Mar-12 A	28-Mar-12 A						
1597	ELS - Trough Construction Method Statement Engineer Review & Comment	12	29-Mar-12 A	11-Apr-12 A						
1579	ELS - ELS Trough and Retaining Walls Engineer Review & Approve - Phase 2	12	16-May-12	27-May-12	138					
<b>Utilities Support Bridge (Man Yiu Street)</b>										
1602	USB - Resubmit Cooling Water Main Bridge Design	28	16-Mar-12 A	12-Apr-12 A						
1603	USB - Cooling Water Main Bridge Engineer Review & Approval	28	12-Apr-12 A	17-May-12	108					
<b>ELS - CWB / Ventilation Building Portion (CH1480 - CH1580)</b>										
1498	ELS - ELS CWB / Top Down Slab Method Statement Engineer Review & Approval	28	09-Mar-12 A	06-May-12	8					
1130	ELS - ELS CWB / Ventilation Building Resubmit Method Statement	15	15-Mar-12 A	10-Apr-12 A						
1529	ELS - ELS CWB / Ventilation Building Engineer Review & Approval	28	17-Mar-12 A	30-Apr-12	14					
1556	ELS - ELS CWB / Vent Building - Engineer Issue Design Change Instruction Ref. <small>CWB/AL/05/26/12/0005/0005/0005/12/12/0005</small>	0		29-Mar-12 A						
1557	ELS - ELS CWB / Vent Building - ELS Design Re-Submission (Based On Design Change)	28	30-Mar-12 A	26-Apr-12	1739					
1132	ELS - ELS CWB / Ventilation Building Engineer Method Statement Review & Approval	28	11-Apr-12 A	29-Apr-12	22					



### Leighton Contractors (Asia) Limited Programme Update 19 (Apr 2012) THREE MONTH ROLLING

Project ID: U019  
 Baseline: DCP3-3  
 Layout: Update Three Month Rolling U018  
 Page 3 of 12

U019 Programme Update 19 (Apr 2012)			
Date	Revision	Checked	Approv...
21-Apr-12	U019	RC	DS
21-Mar-12	U018	RC	DS



# HY/2009/18 Central - Wan Chai Bypass (Central Interchange)



TASK filters: 3 Months, Not HL.

Activity ID	Activity Name	Original Durati...	Start	Finish	Total Float	2012					
						Apr	May	Jun	Jul		
<b>ELS - CWB Man Yiu Street Portion &amp; Tunnel Modification Works (CH1646 - CH1685)</b>											
3932	ELS - ELS CWB Man Yiu Street Portion Design Resubmission	15	25-Feb-12 A	29-Mar-12 A							
1593	ELS - ELS CWB Man Yiu Street Portion Method Statement Resubmission	28	14-Mar-12 A	17-May-12	105						
3933	ELS - ELS CWB Man Yiu Street Portion Engineer Review & Approve	28	30-Mar-12 A	12-Apr-12 A							
1581	ELS - ELS CWB Man Yiu Street Portion Design Resubmission	15	13-Apr-12 A	04-May-12	28						
1582	ELS - ELS CWB Man Yiu Street Portion Engineer Review & Approve	28	05-May-12	01-Jun-12	28						
1595	ELS - ELS CWB Man Yiu Street Portion Engineer Review & Approve	28	18-May-12	14-Jun-12	105						
<b>ELS - CWB Cut &amp; Cover Portion (CH1580 - CH1646)</b>											
1497	ELS - ELS CWB CH1580-CH1646 Portion Re-submit Design	15	17-Feb-12 A	30-Apr-12	17						
3937	ELS - ELS CWB CH1580-CH1646 Portion Prepare Method Statement	15	01-May-12	15-May-12	17						
1496	ELS - ELS CWB CH1580-CH1646 Portion Re-submit Design Engineer Review & Comment	12	01-May-12	12-May-12	48						
3939	ELS - ELS CWB CH1580-CH1646 Portion Method Statement Engineer Review & Approval	28	16-May-12	12-Jun-12	17						
<b>ELS - CWB CRIII Portion (CH1685 - CH1704)</b>											
1604	ELS - ELS CRIII Portion Resubmit Design	28	25-Feb-12 A	29-Mar-12 A							
1605	ELS - ELS CRIII Portion Engineer Review & Approve	28	30-Mar-12 A	12-Apr-12 A							
1606	ELS - ELS CRIII Portion Resubmit Design	28	12-Apr-12 A	04-May-12	471						
3943	ELS - ELS CRIII Portion Prepare Method Statement	15	20-Apr-12	04-May-12	471						

- Current Milestone
- Critical Remaining Work
- Level of Effort
- Remaining Work
- Baseline Milestone
- Project Baseline
- Actual Work

## Leighton Contractors (Asia) Limited Programme Update 19 (Apr 2012) THREE MONTH ROLLING

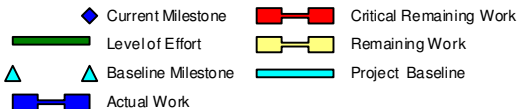
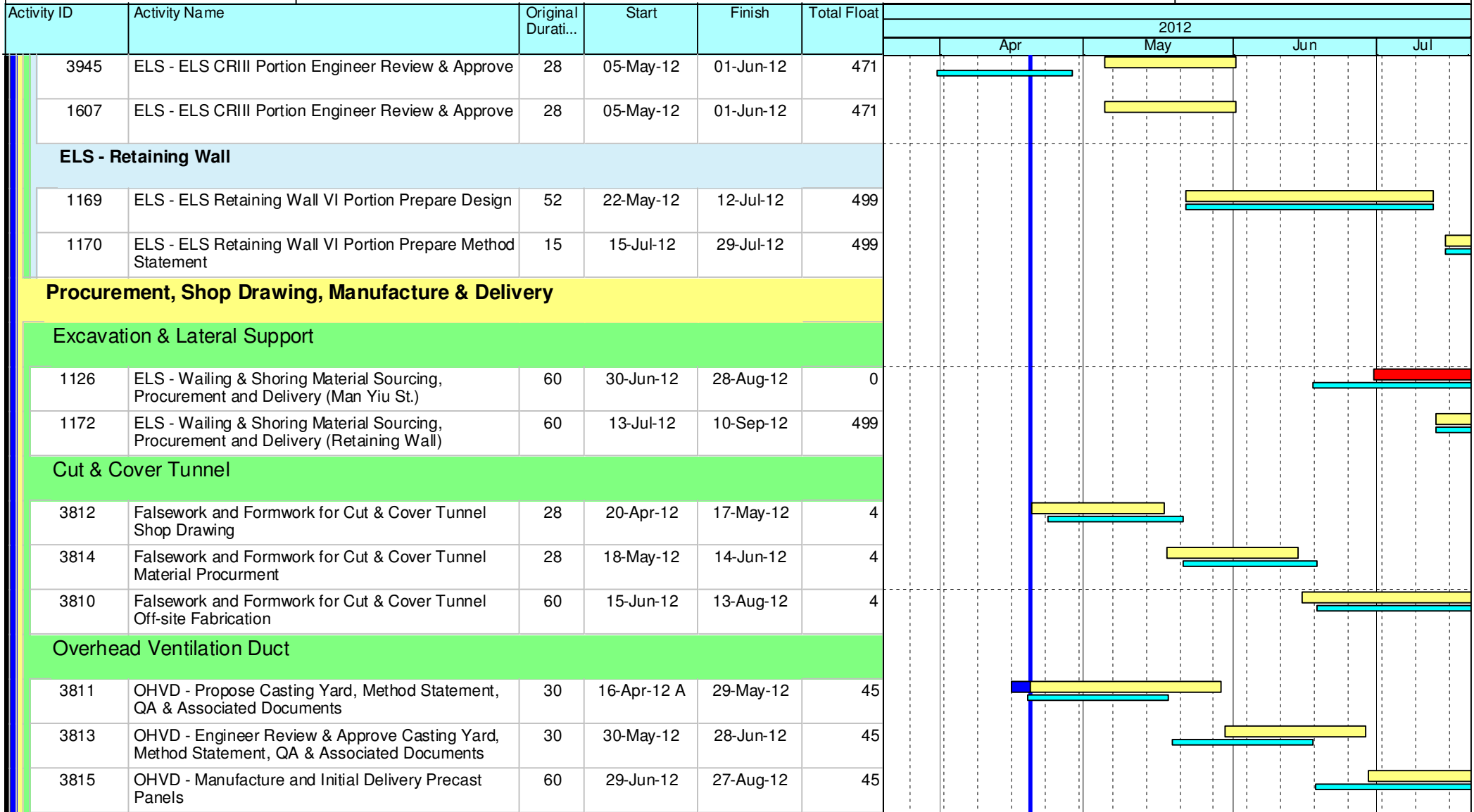
Project ID: U019  
 Baseline: DCP3-3  
 Layout: Update Three Month Rolling U018  
 Page 4 of 12

U019 Programme Update 19 (Apr 2012)			
Date	Revision	Checked	Approv...
21-Apr-12	U019	RC	DS
21-Mar-12	U018	RC	DS

# HY/2009/18 Central - Wan Chai Bypass (Central Interchange)



TASK filters: 3 Months, Not HL.



## Leighton Contractors (Asia) Limited Programme Update 19 (Apr 2012) THREE MONTH ROLLING

Project ID: U019  
 Baseline: DCP3-3  
 Layout: Update Three Month Rolling U018  
 Page 5 of 12

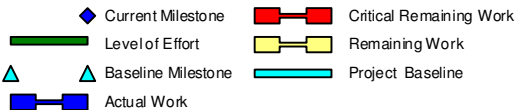
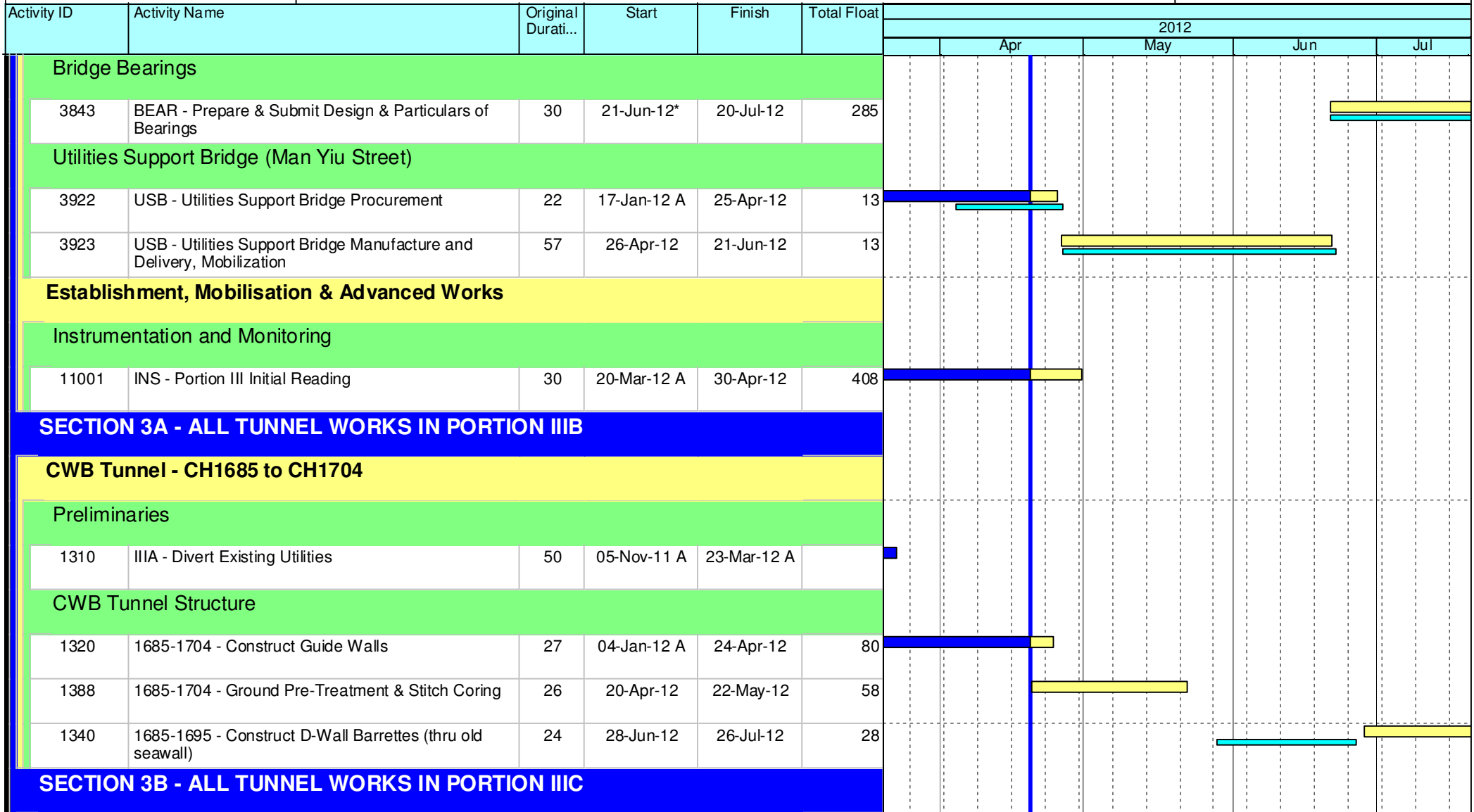
U019 Programme Update 19 (Apr 2012)			
Date	Revision	Checked	Approv...
21-Apr-12	U019	RC	DS
21-Mar-12	U018	RC	DS

Data Date: 20-Apr-12  
 Print Date: 25-Apr-12

## HY/2009/18 Central - Wan Chai Bypass (Central Interchange)



TASK filters: 3 Months, Not HL.



### Leighton Contractors (Asia) Limited Programme Update 19 (Apr 2012) THREE MONTH ROLLING

Project ID: U019  
 Baseline: DCP3-3  
 Layout: Update Three Month Rolling U018  
 Page 6 of 12

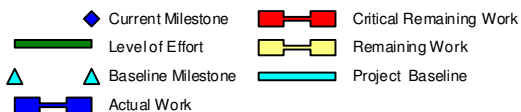
U019 Programme Update 19 (Apr 2012)			
Date	Revision	Checked	Approv...
21-Apr-12	U019	RC	DS
21-Mar-12	U018	RC	DS

# HY/2009/18 Central - Wan Chai Bypass (Central Interchange)



TASK filters: 3 Months, Not HL.

Activity ID	Activity Name	Original Durati...	Start	Finish	Total Float	2012				
						Apr	May	Jun	Jul	
<b>CWB Tunnel - CH1825 to CH2600</b>										
<b>CWB Tunnel Internal Works</b>										
1368	1825-2600 - Access Available via Roof Opening at CH1700	0		20-Apr-12	38					
1370	2213-2600 - Construct Insitu Roof Kickers	78	20-Apr-12	24-Jul-12	38					
<b>SECTION 4B - ALL TUNNEL WORKS IN PORTION IVC, IVD, IVE &amp; IVF</b>										
<b>CWB Tunnel - CH1480 to CH1580</b>										
<b>Preliminaries</b>										
1379	IVC - Temp. Divert Finance St.	12	20-Apr-12	05-May-12	51					
1346	IVC - Reinstate Drainage along Finance Street (Stage 2)	26	07-May-12	05-Jun-12	51					
1352	IVC - Reinstate Finance Street (Stage2 Area)	12	06-Jun-12	19-Jun-12	51					
<b>CWB Tunnel Structure</b>										
11006	1480-1580 - Construct D-Wall / Barrettes (Exclude W2D11)	74	27-Sep-11 A	20-Mar-12 A						
1571	1480-1580 - Sonic Test, Interface Core Test & Full Core Test	24	02-Dec-11 A	24-Apr-12	15					
1409	1480-1580 - Construct D-Wall (W2D11)	10	05-Mar-12 A	20-Mar-12 A						
1468	1480-1580 - Construct D-Wall (W2D18)	10	07-Mar-12 A	20-Mar-12 A						
1411	1480-1580 - Slurry Wall (Ch1480)	15	08-Mar-12 A	30-Mar-12 A						
1491	1480-1580 - Installation of Pump Well	24	09-Mar-12 A	20-Apr-12 A						



## Leighton Contractors (Asia) Limited Programme Update 19 (Apr 2012) THREE MONTH ROLLING

Project ID: U019  
 Baseline: DCP3-3  
 Layout: Update Three Month Rolling U018  
 Page 7 of 12

U019 Programme Update 19 (Apr 2012)			
Date	Revision	Checked	Approv...
21-Apr-12	U019	RC	DS
21-Mar-12	U018	RC	DS

# HY/2009/18 Central - Wan Chai Bypass (Central Interchange)



TASK filters: 3 Months, Not HL.

Activity ID	Activity Name	Original Durati...	Start	Finish	Total Float	2012				
						Apr	May	Jun	Jul	
1408	1480-1580 - Construct D-Wall (W2D8)	11	17-Mar-12 A	31-Mar-12 A						
1575	1480-1580 - Slurry Wall (Ch1580)	14	10-Apr-12 A	23-Apr-12	4					
1347	1480-1580 - Excavate for Top Slabs	18	18-Apr-12 A	08-May-12	5					
1572	1480-1580 - Pump Test	12	24-Apr-12	09-May-12	4					
1349	1480-1580 - Construct Top Slabs	24	09-May-12	05-Jun-12	5					
1580	1480-1580 - Excavate & Lateral Support to Bottom of CWB Tunnel(1480-1600)	100	10-May-12	05-Sep-12	4					
11300	1480-1580 - Excavate 1st Layer	36	10-May-12	20-Jun-12	4					
11320	1480-1580 - Erect 1st Layer Support	33	30-May-12	09-Jul-12	4					
1517	1480-1580 - Excavate 2nd Layer	15	10-Jul-12	26-Jul-12	4					
1519	1480-1580 - Erect 2nd Layer Support	15	17-Jul-12	02-Aug-12	4					

## SECTION 4A - ALL TUNNEL WORKS IN PORTION IVA, IVB, IVG & IVH

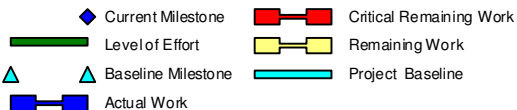
### CWB Tunnel - CH1580 to CH1646

#### Preliminaries

1657	IVA & IVG - Divert Existing Utilities WSD, HGC	26	03-Apr-12 A	10-Apr-12 A						
1566	IVA & IVG - Divert Existing Utilities HEC (Changeover)	29	20-Apr-12	25-May-12	0					

#### CWB Tunnel Structure

1663	1580-1646 - Pre-drilling (Site Investigation) W1D20 - W1D30, BC12 - BC15	30	30-Jul-11 A	30-Mar-12 A						
------	--------------------------------------------------------------------------	----	-------------	-------------	--	--	--	--	--	--



## Leighton Contractors (Asia) Limited Programme Update 19 (Apr 2012) THREE MONTH ROLLING

Project ID: U019  
 Baseline: DCP3-3  
 Layout: Update Three Month Rolling U018  
 Page 8 of 12

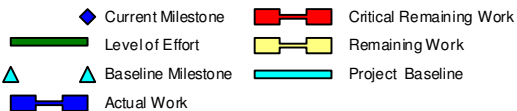
U019 Programme Update 19 (Apr 2012)			
Date	Revision	Checked	Approv...
21-Apr-12	U019	RC	DS
21-Mar-12	U018	RC	DS

# HY/2009/18 Central - Wan Chai Bypass (Central Interchange)



TASK filters: 3 Months, Not HL.

Activity ID	Activity Name	Original Durati...	Start	Finish	Total Float	2012				
						Apr	May	Jun	Jul	
1664	1580-1646 - Construct Guide Walls W1D20 - W1D30, BC12 - BC15	48	30-Jul-11 A	24-Apr-12	29					
1341	1580-1646 - Construct Guide Walls (W2D20 - W2D30) Exclude W2D28	18	12-Dec-11 A	24-Apr-12	41					
1665	1580 - 1646 - Construct D-Wall / Barrettes 1600 - 1646	46	09-Jan-12 A	13-Jun-12	0					
1387	1580 - 1646 - Construct Utilities Bridges	26	08-Mar-12 A	02-Apr-12 A						
1482	1580 - 1646 - Construct D-Wall (W1D24)	5	19-Mar-12 A	24-Mar-12 A						
1487	1580 - 1646 - Construct D-Wall (W2D23)	12	20-Mar-12 A	03-Apr-12 A						
1485	1580 - 1646 - Construct D-Wall (W2D20)	6	22-Mar-12 A	28-Mar-12 A						
1483	1580 - 1646 - Construct D-Wall (W1D23)	14	27-Mar-12 A	19-Apr-12 A						
1488	1580 - 1646 - Construct D-Wall (W2D19)	6	29-Mar-12 A	05-Apr-12 A						
1509	1580 - 1646 - Construct D-Wall (BC13)	16	29-Mar-12 A	05-May-12	1					
1511	1580 - 1646 - Construct D-Wall (BC12)	16	11-Apr-12 A	27-Apr-12	6					
1515	1580 - 1646 - Construct D-Wall (BC11)	14	30-Apr-12	16-May-12	24					
1513	1580 - 1646 - Construct D-Wall (BC14)	12	07-May-12	19-May-12	1					
1666	1580-1646 - Slurry Wall	24	16-May-12	12-Jun-12	1					
1567	1580 - 1646 - Construct D-Wall (W1D30)	8	26-May-12	04-Jun-12	0					
1568	1580 - 1646 - Construct D-Wall (W1D28)	8	29-May-12	06-Jun-12	0					
1569	1580 - 1646 - Construct D-Wall (W1D29)	8	31-May-12	08-Jun-12	0					



## Leighton Contractors (Asia) Limited Programme Update 19 (Apr 2012) THREE MONTH ROLLING

Project ID: U019  
 Baseline: DCP3-3  
 Layout: Update Three Month Rolling U018  
 Page 9 of 12

U019 Programme Update 19 (Apr 2012)			
Date	Revision	Checked	Approv...
21-Apr-12	U019	RC	DS
21-Mar-12	U018	RC	DS

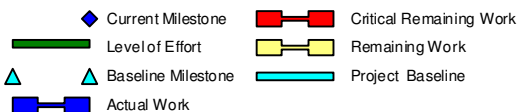


## HY/2009/18 Central - Wan Chai Bypass (Central Interchange)



TASK filters: 3 Months, Not HL.

Activity ID	Activity Name	Original Durati...	Start	Finish	Total Float	2012					
						Apr	May	Jun	Jul		
1573	1580 - 1646 - Construct D-Wall (W2D30)	8	02-Jun-12	11-Jun-12	77						
1574	1580 - 1646 - Construct D-Wall (W2D29)	8	05-Jun-12	13-Jun-12	77						
1667	1580-1646 - Sonic Test, Interface Core Test & Full Core Test	24	14-Jun-12	13-Jul-12	25						
1668	1580-1646 - Pump Test	12	14-Jun-12	28-Jun-12	1						
1391	1580-1646 - Excavate Top Slab	18	29-Jun-12	20-Jul-12	1						
<b>CWB Tunnel - CH1646 to CH1685</b>											
<b>CWB Tunnel Structure</b>											
2540	1646-1685 - Pre-drilling (Site Investigation)	25	15-Dec-11 A	23-Apr-12	9						
2550	1646-1685 - Construct Guide Walls	25	20-Apr-12	21-May-12	4						
1389	1646-1685 - Ground Treatment	12	24-Apr-12	09-May-12	14						
2560	1646-1685 - Construct Barrettes BC16-BC18, BC21, BC22	27	26-May-12	27-Jun-12	0						
1561	1646-1685 - Construct Barrettes BC21	12	26-May-12	08-Jun-12	0						
1562	1646-1685 - Construct Barrettes BC22	12	30-May-12	12-Jun-12	66						
1563	1646-1685 - Construct Barrettes BC16	12	04-Jun-12	16-Jun-12	66						
1564	1646-1685 - Construct Barrettes BC17	12	08-Jun-12	21-Jun-12	66						
2705	1646-1685 - Install Pipe/Sheet Pile Wall	50	09-Jun-12	08-Aug-12	0						
1565	1646-1685 - Construct Barrettes BC18	12	13-Jun-12	27-Jun-12	66						



### Leighton Contractors (Asia) Limited Programme Update 19 (Apr 2012) THREE MONTH ROLLING

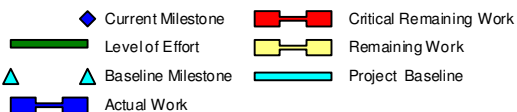
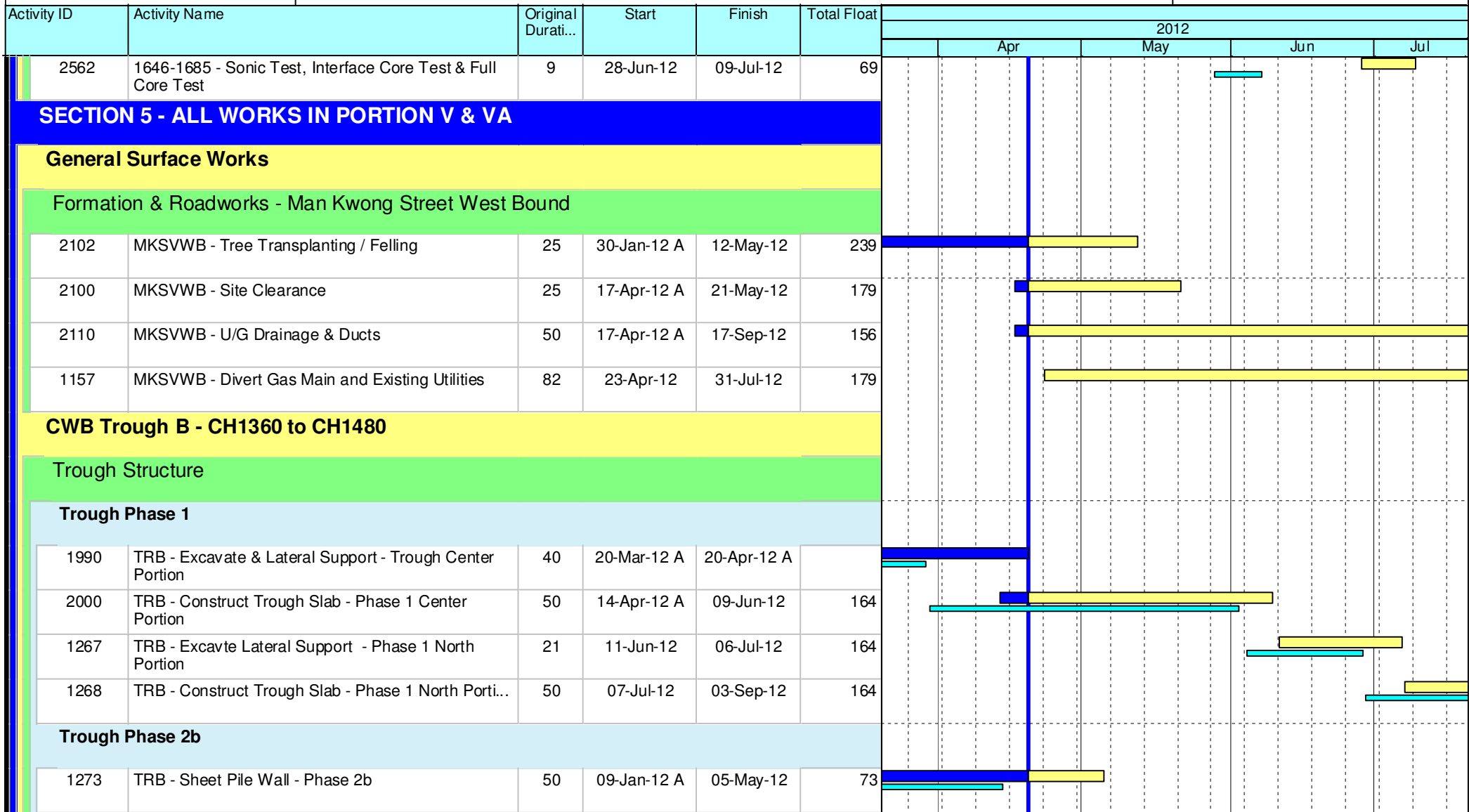
Project ID: U019  
 Baseline: DCP3-3  
 Layout: Update Three Month Rolling U018  
 Page 10 of 12

U019 Programme Update 19 (Apr 2012)			
Date	Revision	Checked	Approv...
21-Apr-12	U019	RC	DS
21-Mar-12	U018	RC	DS

# HY/2009/18 Central - Wan Chai Bypass (Central Interchange)



TASK filters: 3 Months, Not HL.



## Leighton Contractors (Asia) Limited Programme Update 19 (Apr 2012) THREE MONTH ROLLING

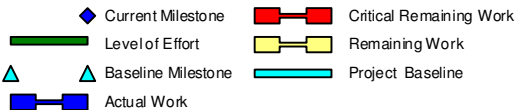
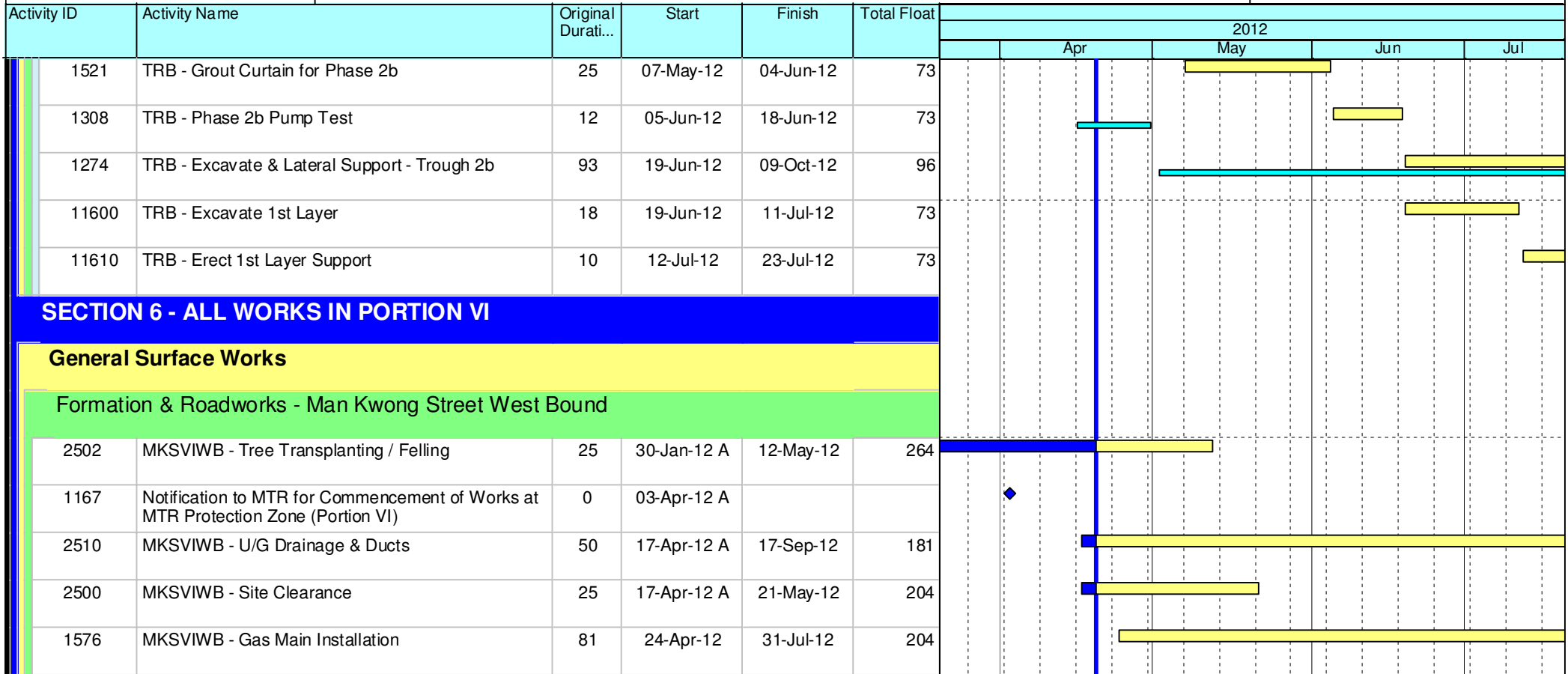
Project ID: U019  
 Baseline: DCP3-3  
 Layout: Update Three Month Rolling U018  
 Page 11 of 12

U019 Programme Update 19 (Apr 2012)			
Date	Revision	Checked	Approv...
21-Apr-12	U019	RC	DS
21-Mar-12	U018	RC	DS

# HY/2009/18 Central - Wan Chai Bypass (Central Interchange)



TASK filters: 3 Months, Not HL.



## Leighton Contractors (Asia) Limited Programme Update 19 (Apr 2012) THREE MONTH ROLLING

Project ID: U019  
Baseline: DCP3-3  
Layout: Update Three Month Rolling U018  
Page 12 of 12

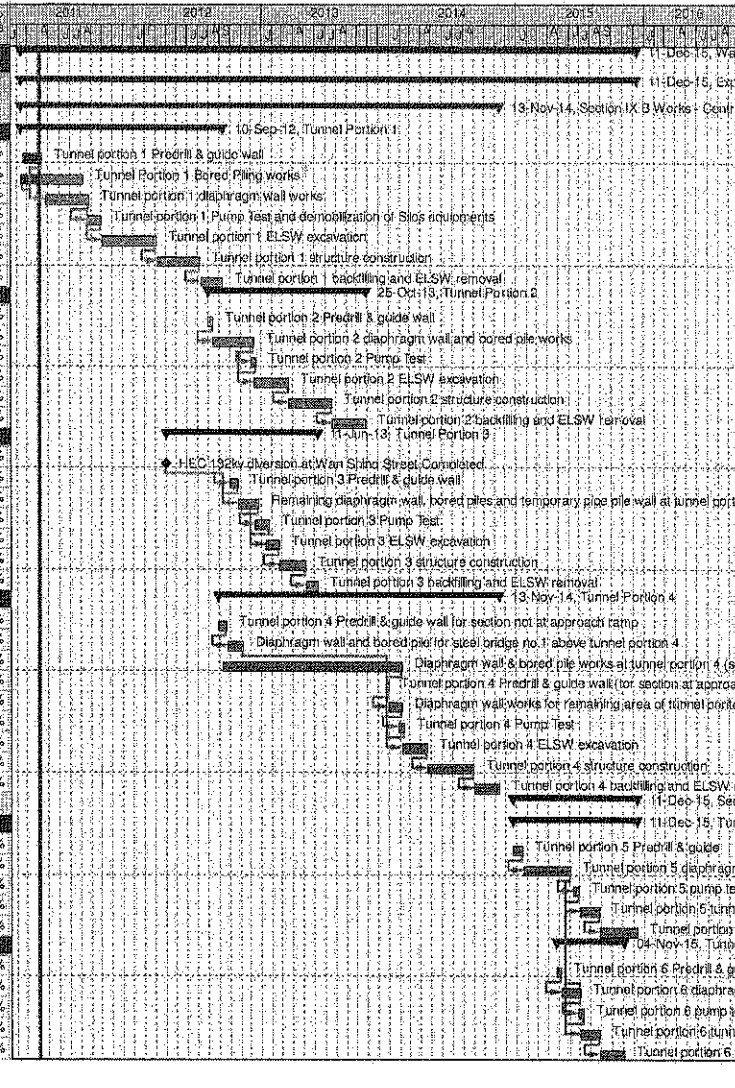
U019 Programme Update 19 (Apr 2012)			
Date	Revision	Checked	Approv...
21-Apr-12	U019	RC	DS
21-Mar-12	U018	RC	DS



Wan Chai Development Phase II - Central - Wan Chai  
Bypass at Wan Chai East CONTRACT HK/2009/02

CHUN WO - CRGL JV

Activity ID	Activity Name	OD	Start	Finish	% Planned	2011	2012	2013	2014	2015	2016
<b>Wan Chai Development Phase II - Central - Wan Chai Bypass at Wan Chai East</b>											
<b>Expanded and More Detailed Initial Works Programme</b>											
Section IX B Works - Central - Wan Chai Bypass Tunnel Structure from chainage 3400 to eastern tunnel											
<b>Tunnel Portion 1</b>											
S9B-T1-0005	Tunnel portion 1 Predrill & guide wall	10	18-Feb-11	13-Apr-11	40%						
S9B-T1-0007	Tunnel Portion 1 Bored Piling works	105	09-Feb-11	08-Aug-11	0%						
S9B-T1-0010	Tunnel portion 1 diaphragm wall works	105	26-Apr-11	27-Aug-11	0%						
S9B-T1-0015	Tunnel portion 1 Pump Test and demobilization of Slos equipments	35	20-Aug-11	30-Sep-11	0%						
S9B-T1-0020	Tunnel portion 1 ELSW excavation	130	03-Oct-11	07-Mar-12	0%						
S9B-T1-0030	Tunnel portion 1 structure construction	100	09-Mar-12	09-Jul-12	0%						
S9B-T1-0040	Tunnel portion 1 backfilling and ELSW removal	54	10-Jul-12	10-Sep-12	0%						
<b>Tunnel Portion 2</b>											
S9B-T2-0105	Tunnel portion 2 Predrill & guide wall	10	02-Aug-12	13-Aug-12	0%						
S9B-T2-0010	Tunnel portion 2 diaphragm wall and bored pile works	100	14-Aug-12	10-Dec-12	0%						
S9B-T2-0015	Tunnel portion 2 Pump Test	14	03-Dec-12	18-Dec-12	0%						
S9B-T2-0020	Tunnel portion 2 ELSW excavation	80	11-Dec-12	19-Mar-13	0%						
S9B-T2-0030	Tunnel portion 2 structure construction	100	20-Mar-13	22-Jul-13	0%						
S9B-T2-0040	Tunnel portion 2 backfilling and ELSW removal	80	23-Jul-13	25-Oct-13	0%						
<b>Tunnel Portion 3</b>											
S9B-T3-0005	HEC 132kv diversion at Wan Shing Street Completed	0	01-Apr-12*		0%						
S9B-T3-0008	Tunnel portion 3 Predrill & guide wall	20	02-Oct-12	25-Oct-12	0%						
S9B-T3-0010	Remaining diaphragm wall, bored piles and temporary pipe pile wall at tunnel portion 3.	50	25-Oct-12	22-Dec-12	0%						
S9B-T3-0015	Tunnel portion 3 Pump Test	30	15-Dec-12	22-Jan-13	0%						
S9B-T3-0020	Tunnel portion 3 ELSW excavation	30	15-Jan-13	20-Feb-13	0%						
S9B-T3-0030	Tunnel portion 3 structure construction	80	21-Feb-13	06-May-13	0%						
S9B-T3-0040	Tunnel portion 3 backfilling and ELSW removal	30	07-May-13	11-Jun-13	0%						
<b>Tunnel Portion 4</b>											
S9B-T4-0005	Tunnel portion 4 Predrill & guide wall for section not at approach ramp	21	30-Aug-12	22-Sep-12	0%						
S9B-T4-0010	Diaphragm wall and bored pile for steel bridge no.1 above tunnel portion 4	40	24-Sep-12	10-Nov-12	0%						
S9B-T4-0020	Diaphragm wall & bored pile works at tunnel portion 4 (section not at approach ramp)	420	11-Sep-12	05-Feb-14	0%						
S9B-T4-0025	Tunnel portion 4 Predrill & guide wall (for section at approach ramp)	5	23-Dec-13	30-Dec-13	0%						
S9B-T4-0030	Diaphragm wall works for remaining area of tunnel portion 4 (for section at approach ramp)	30	31-Dec-13	06-Feb-14	0%						
S9B-T4-0035	Tunnel portion 4 Pump Test	14	28-Jan-14	14-Feb-14	0%						
S9B-T4-0040	Tunnel portion 4 ELSW excavation	60	07-Feb-14	19-Apr-14	0%						
S9B-T4-0050	Tunnel portion 4 structure construction	110	22-Apr-14	01-Sep-14	0%						
S9B-T4-0060	Tunnel portion 4 backfilling and ELSW removal	60	02-Sep-14	13-Nov-14	0%						
Section X Works - Central - Wan Chai Bypass Tunnel Structure from western tunnel to chainage 3400											
<b>Tunnel Portion 5</b>											
S10-T5-0005	Tunnel portion 5 Predrill & guide	21	23-Dec-14	19-Jan-15	0%						
S10-T5-0010	Tunnel portion 5 diaphragm wall & bored pile works	110	20-Jan-15	04-Jun-15	0%						
S10-T5-0015	Tunnel portion 5 pump test	14	13-Jun-15	30-Jun-15	0%						
S10-T5-0020	Tunnel portion 5 tunnel ELSW excavation	45	04-Jul-15	25-Aug-15	0%						
S10-T5-0030	Tunnel portion 5 tunnel structure construction	90	26-Aug-15	11-Dec-15	0%						
<b>Tunnel Portion 6</b>											
S10-T6-0040	Tunnel portion 6 Predrill & guide	12	24-Apr-15	08-May-15	0%						
S10-T6-0050	Tunnel portion 6 diaphragm wall & bored pile works at Area 10	45	09-May-15	09-Jul-15	0%						
S10-T6-0055	Tunnel portion 6 pump test	14	25-Jun-15	11-Jul-15	0%						
S10-T6-0060	Tunnel portion 6 tunnel ELSW excavation at Area 10	45	04-Jul-15	26-Aug-15	0%						
S10-T6-0070	Tunnel portion 6 tunnel structure construction at Area 10	58	26-Aug-15	04-Nov-15	0%						



**CEDD CONTRACT NO. HK/2009/02**  
**Wan Chai Development Phase II - Central Wan Chai Bypass at Wan Chai East (Contract 2)**  
 Revised Programme dated 7 April 2011

Date	Revision	Checked	Approved
07-Apr-11		KT	KY

Page 10 of 11

Activity ID	Activity Name	Rem Dur	Start	Finish	2012															
					May					June					July				August	
					23	30	07	14	21	28	04	11	18	25	02	09	16	23	30	06
<b>3MRP - MAY 2012 to AUG 2012</b>																				
<b>01 - CONTRACT DATES</b>																				
<b>01.2 - Possession of Site</b>																				
0120-2600	Possession to Portion VIIIA	0	29-Jul-12*																◆ Possession to Portion VIIIA	
0120-2700	Possession to Portion VIIIB	0	29-Jul-12*																◆ Possession to Portion VIIIB	
0120-2800	Possession to Portion IXA	0	29-Jul-12*																◆ Possession to Portion IXA	
0120-2900	Possession to Portion IXB	0	29-Jul-12*																◆ Possession to Portion IXB	
<b>02 - PRE-CONSTRUCTION WORKS</b>																				
<b>02.2 - Contractor's Submission</b>																				
0220-1250	Concrete Ready Mix/Design Mix - Concrete Plant Trials & Approval	8	04-Aug-11 A	28-May-12															Concrete Ready Mix/Design Mix - Concrete Plant Trials & Approval	
0220-1260	Drainage Pipes & Materials - Submission	7	15-Sep-11 A	27-May-12															Drainage Pipes & Materials - Submission	
0220-1270	Drainage Pipes & Materials - ER Review/Comment	14	28-May-12	10-Jun-12															Drainage Pipes & Materials - ER Review/Comment	
0220-1280	Drainage Pipes & Materials - Resubmission	7	11-Jun-12	17-Jun-12															Drainage Pipes & Materials - Resubmission	
0220-1290	Drainage Pipes & Materials - ER Approval	14	18-Jun-12	01-Jul-12															Drainage Pipes & Materials - ER Approval	
0220-1300	Drainage Pipes & Materials - Procurement & Delivery	14	25-Jun-12	08-Jul-12															Drainage Pipes & Materials - Procurement & Delivery	
0220-1360	Tunnel Structures Materials - Submission	28	02-Jul-12*	29-Jul-12															Tunnel Structures Materials - Submission	
0220-1370	Tunnel Structures Materials - ER Review/Comment	28	30-Jul-12	26-Aug-12															Tunnel Structures Materials - ER Review/Comment	
0220-1460	Bridge Bearing - Submission	15	10-Oct-11 A	16-Jul-12															Bridge Bearing - Submission	
0220-1470	Bridge Bearing - ER Review/Comment	28	17-Jul-12	13-Aug-12															Bridge Bearing - ER Review/Comment	
<b>02.3 - Method Statement / Shop Drawings</b>																				
0230-1133	MS Marine Piling - Resubmission (low headroom)	0	19-Apr-12 A	11-May-12 A															MS Marine Piling - Resubmission (low headroom)	
0230-1134	MS Marine Piling - ER Approval (low headroom)	14	12-May-12 A	03-Jun-12															MS Marine Piling - ER Approval (low headroom)	
0230-1260	MS Cut & Cover Tunnel - Submission	14	21-Mar-12 A	03-Jun-12															MS Cut & Cover Tunnel - Submission	
0230-1270	MS Cut & Cover Tunnel - ER Review & Comment	28	04-Jun-12	01-Jul-12															MS Cut & Cover Tunnel - ER Review & Comment	
0230-1280	MS Cut & Cover Tunnel - Resubmission	28	02-Jul-12	29-Jul-12															MS Cut & Cover Tunnel - Resubmission	
0230-1290	MS Cut & Cover Tunnel - ER Approval	28	30-Jul-12	26-Aug-12															MS Cut & Cover Tunnel - ER Approval	
0230-1340	MS Pre-cast Segment Bridge - Submission	28	01-Aug-12*	28-Aug-12															MS Pre-cast Segment Bridge - Submission	
0230-1460	MS Stressing/Destressing Tendons - Submission	28	01-Aug-12*	28-Aug-12															MS Stressing/Destressing Tendons - Submission	
0230-1560	MS Precasting of Bridge Segment & Beam - Resubmission	24	07-May-12 A	13-Jun-12															MS Precasting of Bridge Segment & Beam - Resubmission	
0230-1570	MS Precasting of Bridge Segment & Beam - ER Approval	28	14-Jun-12	11-Jul-12															MS Precasting of Bridge Segment & Beam - ER Approval	
0230-1700	MS Temporary Bridge TA - Submission	28	01-Aug-12*	28-Aug-12															MS Temporary Bridge TA - Submission	
<b>02.4 - Contractor's Design and Build Items</b>																				
0240-1010	Temp Bridge "TA" Design - Prep & Submit	48	16-Dec-11 A	07-Jul-12															Temp Bridge "TA" Design - Prep & Submit	
0240-1020	Temp Bridge "TA" Design - ER review and comment	28	08-Jul-12	04-Aug-12															Temp Bridge "TA" Design - ER review and comment	
0240-1030	Temp Bridge "TA" Design - Resubmission	60	05-Aug-12	03-Oct-12															Temp Bridge "TA" Design - Resubmission	
0240-1041	Temp Bridge "TD" Design - Prep & Submit	120	01-Aug-12*	28-Nov-12															Temp Bridge "TD" Design - Prep & Submit	
0240-1090	Int. Noise Enclosure Design - Public Consultation	60	29-Jul-11 A	19-Jul-12															Int. Noise Enclosure Design - Public Consultation	
0240-1095	Int. Noise Enclosure Design - ACABAS/ER Consultation/Submission	72	16-Dec-11 A	31-Jul-12															Int. Noise Enclosure Design - ACABAS/ER Consultation/Submission	
0240-1100	Int. Noise Enclosure Design - ER review & comment	28	01-Aug-12	28-Aug-12															Int. Noise Enclosure Design - ER review & comment	
0240-1120	Noise Barrier Design - Public Consultation	60	29-Jul-11 A	19-Jul-12															Noise Barrier Design - Public Consultation	
0240-1122	Noise Barrier Design - ACABAS/ER Consultation/Submission	72	16-Dec-11 A	31-Jul-12															Noise Barrier Design - ACABAS/ER Consultation/Submission	
0240-1124	Noise Barrier Design - ER review & comment	28	01-Aug-12	28-Aug-12															Noise Barrier Design - ER review & comment	
0240-1130	Perm. Noise Enclosure Design - Public Consultation	150	14-Feb-12 A	17-Oct-12															Perm. Noise Enclosure Design - Public Consultation	
0240-1135	Perm. Noise Enclosure Design - ACABAS/ER Consultation/Submission	90	13-Jun-12	10-Sep-12															Perm. Noise Enclosure Design - ACABAS/ER Consultation/Submission	

- Remaining Level of Effort
- Actual Level of Effort
- Actual Work
- Remaining Work
- Critical Remaining Work
- ◆ Milestone

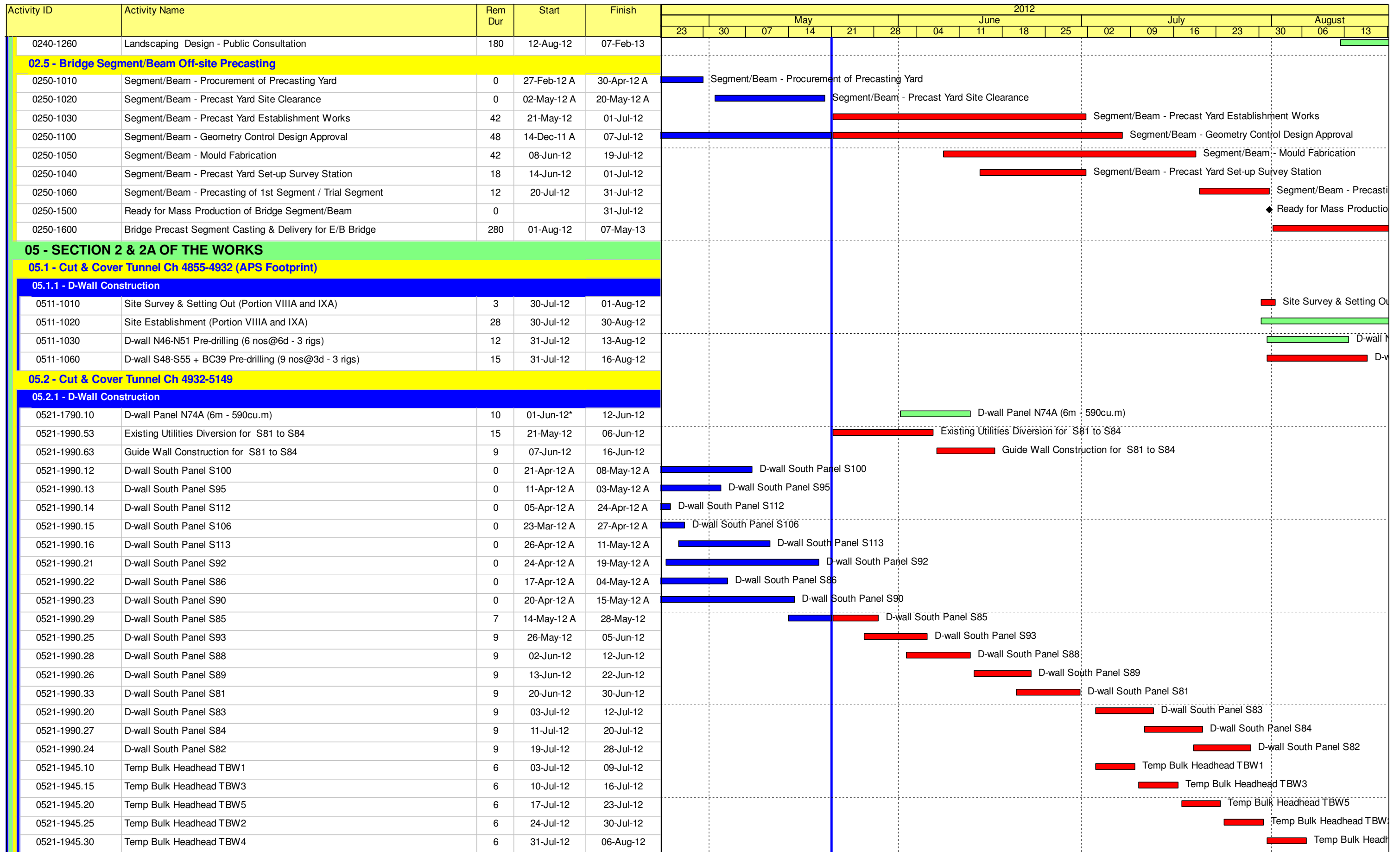
**Contract HY/2009/19**

**Three Month Rolling Programme (21 MAY 2012 to 20 AUG 2012)**

3MRP

3MRP - MAY 2012 to AUG 2012





- █ Remaining Level of Effort
- █ Actual Level of Effort
- █ Actual Work
- █ Remaining Work
- █ Critical Remaining Work
- ◆ Milestone

### Contract HY/2009/19

### Three Month Rolling Programme (21 MAY 2012 to 20 AUG 2012)

3MRP

3MRP - MAY 2012 to AUG 2012

Page 2 of 7

Activity ID	Activity Name	Rem Dur	Start	Finish	2012															
					May					June					July				August	
					23	30	07	14	21	28	04	11	18	25	02	09	16	23	30	06
0521-1800.20	D-wall N65-N70 Pre-drilling (6 nos. - 1 rig@6d/hole)	0	02-Apr-12 A	19-May-12 A	D-wall N65-N70 Pre-drilling (6 nos. - 1 rig@6d/hole)															
0521-1810	D-wall N59-N70 Grouting for Existing Seawall Rubble Mound	14	27-Apr-12 A	05-Jun-12	D-wall N59-N70 Grouting for Existing Seawall Rubble Mound															
0521-1820	D-wall N59-N70 Guide Wall	14	09-Apr-12 A	05-Jun-12	D-wall N59-N70 Guide Wall															
0521-1840	D-wall N52-N58 Pre-drilling (7 nos@6d - 2 rig)	9	09-Apr-12 A	30-May-12	D-wall N52-N58 Pre-drilling (7 nos@6d - 2 rig)															
0521-1850	D-wall N52-N58 Grouting for Existing Seawall Rubble Mound	14	03-May-12 A	05-Jun-12	D-wall N52-N58 Grouting for Existing Seawall Rubble Mound															
0521-1860	D-wall N52-N58 Guide Wall	12	31-May-12	13-Jun-12	D-wall N52-N58 Guide Wall															
0521-1830.15	D-wall Panel N69 (6m - 621cu.m)	10	09-May-12 A	31-May-12	D-wall Panel N69 (6m - 621cu.m)															
0521-1830.10	D-wall Panel N70 (6m - 630cu.m)	10	01-Jun-12	12-Jun-12	D-wall Panel N70 (6m - 630cu.m)															
0521-1830.25	D-wall Panel N67 (3.95m - 409cu.m)	10	13-Jun-12	25-Jun-12	D-wall Panel N67 (3.95m - 409cu.m)															
0521-1835.10	D-wall Panel N54 (3.77m - 355cu.m)	10	14-Jun-12	26-Jun-12	D-wall Panel N54 (3.77m - 355cu.m)															
0521-1830.35	D-wall Panel N65 (5.7m - 590cu.m)	10	22-Jun-12	05-Jul-12	D-wall Panel N65 (5.7m - 590cu.m)															
0521-1835.15	D-wall Panel N59 (5.6m - 529cu.m)	10	25-Jun-12	06-Jul-12	D-wall Panel N59 (5.6m - 529cu.m)															
0521-1830.20	D-wall Panel N68 (3.95m - 409cu.m)	10	04-Jul-12	14-Jul-12	D-wall Panel N68 (3.95m - 409cu.m)															
0521-1835.20	D-wall Panel N52 (5.6m - 529cu.m)	10	05-Jul-12	16-Jul-12	D-wall Panel N52 (5.6m - 529cu.m)															
0521-1830.30	D-wall Panel N66 (4.75m - 492cu.m)	10	13-Jul-12	24-Jul-12	D-wall Panel N66 (4.75m - 492cu.m)															
0521-1835.25	D-wall Panel N63 (5.6m - 529cu.m)	10	14-Jul-12	25-Jul-12	D-wall Panel N63 (5.6m - 529cu.m)															
0521-1835.30	D-wall Panel N58 (5.6m - 529cu.m)	10	24-Jul-12	03-Aug-12	D-wall Panel N58 (5.6m - 529cu.m)															
0521-1835.35	D-wall Panel N62 (5.6m - 529cu.m)	10	02-Aug-12	13-Aug-12	D-wall Panel N62 (5.6m - 529cu.m)															
0521-1835.40	D-wall Panel N55 (5.6m - 529cu.m)	10	11-Aug-12	22-Aug-12	D-wall Panel N55 (5.6m - 529cu.m)															
0521-2070	D-wall S66-S77 Guide Wall	11	16-May-12 A	02-Jun-12	D-wall S66-S77 Guide Wall															
0521-1990.42	D-wall South Panel S75	10	26-May-12	07-Jun-12	D-wall South Panel S75															
0521-1990.36	D-wall South Panel S70	10	07-Jun-12	19-Jun-12	D-wall South Panel S70															
0521-1990.39	D-wall South Panel S73	10	19-Jun-12	03-Jul-12	D-wall South Panel S73															
0521-1990.43	D-wall South Panel S77	10	03-Jul-12	14-Jul-12	D-wall South Panel S77															
0521-1990.34	D-wall South Panel S68	10	11-Jul-12	23-Jul-12	D-wall South Panel S68															
0521-1990.40	D-wall South Panel S74	10	19-Jul-12	31-Jul-12	D-wall South Panel S74															
0521-1990.35	D-wall South Panel S69	10	27-Jul-12	08-Aug-12	D-wall South Panel S69															
0521-1990.38	D-wall South Panel S72	10	04-Aug-12	16-Aug-12	D-wall South Panel S72															
0521-2090	D-wall S60-S65 Pre-drilling	18	27-Feb-12 A	03-Jul-12	D-wall S60-S65 Pre-drilling															
0521-2100	D-wall S60-S65 Guide Wall	15	04-Jul-12	20-Jul-12	D-wall S60-S65 Guide Wall															
0521-2130	D-wall S56-S59 Guide Wall	15	12-Jul-12	28-Jul-12	D-wall S56-S59 Guide Wall															
<b>05.2.2 - Barrette Construction</b>																				
0522-2210.64	Barrette Pile BC64	0	12-Apr-12 A	09-May-12 A	Barrette Pile BC64															
0522-2210.68	Barrette Pile BC68	0	29-Mar-12 A	30-Apr-12 A	Barrette Pile BC68															
0522-2210.57	Barrette Pile BC57	5	07-May-12 A	25-May-12	Barrette Pile BC57															
0522-2210.61	Barrette Pile BC61	9	21-May-12	30-May-12	Barrette Pile BC61															
0522-2210.63	Barrette Pile BC63	1	19-Mar-12 A	21-May-12	Barrette Pile BC63															
0522-2210.65	Barrette Pile BC65	9	24-May-12	02-Jun-12	Barrette Pile BC65															
0522-2210.66	Barrette Pile BC66	9	01-Jun-12	11-Jun-12	Barrette Pile BC66															
0522-2210.70	Barrette Pile BC62	10	09-Jun-12	20-Jun-12	Barrette Pile BC62															
0522-2210.55	Barrette Pile BC55	9	18-Jun-12	28-Jun-12	Barrette Pile BC55															
0522-2210.58	Barrette Pile BC58	9	27-Jun-12	07-Jul-12	Barrette Pile BC58															
0522-2210.59	Barrette Pile BC59	9	06-Jul-12	16-Jul-12	Barrette Pile BC59															
0522-2210.56	Barrette Pile BC56	9	14-Jul-12	24-Jul-12	Barrette Pile BC56															

- Remaining Level of Effort
- Actual Level of Effort
- Actual Work
- Remaining Work
- Critical Remaining Work
- ◆ Milestone

**Contract HY/2009/19**

**Three Month Rolling Programme (21 MAY 2012 to 20 AUG 2012)**

3MRP

3MRP - MAY 2012 to AUG 2012

Activity ID	Activity Name	Rem Dur	Start	Finish	2012																					
					May					June				July				August								
					23	30	07	14	21	28	04	11	18	25	02	09	16	23	30	06	13					
0522-2210.54	Barrette Pile BC54	9	11-Aug-12	21-Aug-12																						
0522-2185	Barrette BC54 Pre-drilling	6	21-May-12*	26-May-12																						
0522-2190	Barrette BC54-BC56 Grouting for Existing Seawall Rubble Mound	9	28-May-12	06-Jun-12																						
0522-2200	Barrette BC54-BC56 Guide Wall	9	31-May-12	09-Jun-12																						
0522-2210.52	Barrette Pile BC52	10	21-Jul-12	01-Aug-12																						
0522-2210.50	Barrette Pile BC50	10	28-Jul-12	08-Aug-12																						
0522-2210.51	Barrette Pile BC51	10	04-Aug-12	15-Aug-12																						
0522-2240	Barrette BC57-BC68 Guide Wall	10	23-Mar-12 A	31-May-12																						
0522-2270	Barrette BC43-BC52 Pre-drilling	25	21-May-12	18-Jun-12																						
0522-2280	Barrette BC43-BC52 Grouting for Existing Seawall Rubble Mound	12	11-Jun-12	25-Jun-12																						
0522-2290	Barrette BC43-BC52 Guide Wall	12	26-Jun-12	10-Jul-12																						
0522-2320	Barrette BC40-BC42 Pre-drilling	17	09-Apr-12 A	10-Jul-12																						
0522-2330	Barrette BC40-BC42 Grouting for Existing Seawall Rubble Mound	18	10-Jul-12	31-Jul-12																						
0522-2340	Barrette BC40-BC42 Guide Wall	18	31-Jul-12	21-Aug-12																						
0522-2360	Bulkhead BW1-BW7 Pre-drilling	25	19-Jun-12	19-Jul-12																						
0522-2370	Bulkhead BW1-BW7 Grouting for Existing Seawall Rubble Mound	18	20-Jul-12	09-Aug-12																						
0522-2380	Bulkhead BW1-BW7 Guide Wall	12	10-Aug-12	23-Aug-12																						
<b>05.3 - Box Culvert T1</b>																										
0530-3010	Bay 5 Road Reinstatement	0	28-Mar-12 A	25-Apr-12 A																						
0530-3020	TTM for Bay 3 and 4 Construction	9	15-Jun-12*	26-Jun-12																						
0530-3030	Bay 3 and 4 - Site Clearance/Formation	3	27-Jun-12	29-Jun-12																						
0530-3040	Bay 3 and 4 - Trench excavation	36	30-Jun-12	11-Aug-12																						
0530-3210	Relocate Hoarding of the Temporary FEHD Depot at Portion X	18	04-Jun-12*	25-Jun-12																						
0530-3220	1500 dia. Storm Drain - Sheetpiles	36	26-Jun-12	07-Aug-12																						
0530-3230	1500 dia. Storm Drain - Excavation S79 to S94	15	08-Aug-12	24-Aug-12																						
<b>06 - SECTION 3 OF THE WORKS</b>																										
<b>06.2 - Box Culvert U1</b>																										
0620-2340	U1 Pre-drilling for piling for U1 (48no) (4 set) at VB,VD&III	12	10-Jan-12 A	02-Jun-12																						
0620-2345	U1 Pre-bored H-pile Bay 7-8 (8 nos/1 set) at VB,VD & III	43	12-Apr-12 A	12-Jul-12																						
0620-2355	U1 Pre-bored H-pile Bay 9-12 (16 nos/3 set) at III	20	05-Apr-12 A	12-Jun-12																						
0620-2350	U1 Pre-bored H-pile Bay 1-6 (24 nos/3 set) at VB	46	12-Jul-12	04-Sep-12																						
<b>10 - SECTION X OF THE WORKS</b>																										
<b>10.1 - E/B Bridges (Bridge D, E and F)</b>																										
<b>10.1.1 - Marine Pier Construction</b>																										
<b>Pier F03 to F15</b>																										
1011-1760.60	Pier F3 Marine Bore Pile - F3-6	0	26-Mar-12 A	25-Apr-12 A																						
1011-1760.70	Pier F3 Marine Bore Pile - F3-1	9	26-Apr-12 A	30-May-12																						
1011-1760.80	Pier F3 Marine Bore Pile - F3-6	14	31-May-12	15-Jun-12																						
1011-2090	Marine bored pile testing F3	12	16-Jun-12	30-Jun-12																						
1011-1750.10	Pier F3 Dolphin Socketed H-Pile 1	9	21-Jun-12	03-Jul-12																						
1011-1750.20	Pier F3 Dolphin Socketed H-Pile 1	9	04-Jul-12	13-Jul-12																						
1011-1750.30	Pier F3 Dolphin Socketed H-Pile 1	9	14-Jul-12	24-Jul-12																						
1011-1990	Dismantle Piling Platform at Pier F3	6	25-Jul-12	31-Jul-12																						
1011-2150	F3 Pile Cap Construction	18	01-Aug-12	21-Aug-12																						

- █ Remaining Level of Effort
- █ Actual Level of Effort
- █ Actual Work
- █ Remaining Work
- █ Critical Remaining Work
- ◆ Milestone

**Contract HY/2009/19**

**Three Month Rolling Programme (21 MAY 2012 to 20 AUG 2012)**

3MRP

3MRP - MAY 2012 to AUG 2012

Page 4 of 7

Activity ID	Activity Name	Rem Dur	Start	Finish	2012																	
					May					June					July				August			
					23	30	07	14	21	28	04	11	18	25	02	09	16	23	30	06	13	
1011-1850.10	Pier F4 Dolphin Socketed H-Pile 1	9	21-May-12*	30-May-12																		
1011-2095	Marine bored pile testing F4	12	21-May-12	02-Jun-12																		
1011-1850.20	Pier F4 Dolphin Socketed H-Pile 2	9	31-May-12	09-Jun-12																		
1011-1850.30	Pier F4 Dolphin Socketed H-Pile 3	9	11-Jun-12	20-Jun-12																		
1011-2000	Dismantle Piling Platform at Pier F4	6	21-Jun-12	28-Jun-12																		
1011-2100	Marine bored pile testing F5	12	21-May-12	02-Jun-12																		
1011-1810.10	Pier F5 Dolphin Socketed H-Pile 1	7	20-Jun-12	28-Jun-12																		
1011-1810.20	Pier F5 Dolphin Socketed H-Pile 2	7	29-Jun-12	07-Jul-12																		
1011-1810.30	Pier F5 Dolphin Socketed H-Pile 3	7	09-Jul-12	16-Jul-12																		
1011-1810.40	Pier F5 Dolphin Socketed H-Pile 4	7	17-Jul-12	24-Jul-12																		
1011-1810.50	Pier F5 Dolphin Socketed H-Pile 5	7	25-Jul-12	01-Aug-12																		
1011-1810.60	Pier F5 Dolphin Socketed H-Pile 6	7	02-Aug-12	09-Aug-12																		
1011-2010	Dismantle Piling Platform at Pier F5	6	10-Aug-12	16-Aug-12																		
1011-1800.30	Pier F6 Marine Bore Pile - F6-4	18	28-Feb-12 A	09-Jun-12																		
1011-1800.40	Pier F6 Marine Bore Pile - F6-1	0	25-Apr-12 A	19-May-12 A																		
1011-2105	Marine bored pile testing F6	12	12-Jun-12	26-Jun-12																		
1011-1790.10	Pier F6 Dolphin Socketed H-Pile 1	7	16-Jun-12	25-Jun-12																		
1011-1790.20	Pier F6 Dolphin Socketed H-Pile 2	7	27-Jun-12	05-Jul-12																		
1011-1790.30	Pier F6 Dolphin Socketed H-Pile 3	7	07-Jul-12	14-Jul-12																		
1011-1790.40	Pier F6 Dolphin Socketed H-Pile 4	7	17-Jul-12	24-Jul-12																		
1011-1790.50	Pier F6 Dolphin Socketed H-Pile 5	7	26-Jul-12	02-Aug-12																		
1011-1790.60	Pier F6 Dolphin Socketed H-Pile 6	7	04-Aug-12	11-Aug-12																		
1011-1920.30	Pier F7 Marine Bored Pile F7-1	9	11-Apr-12 A	30-May-12																		
1011-1920.40	Pier F7 Marine Bored Pile F7-3	0	03-May-12 A	17-May-12 A																		
1011-2110	Marine bored pile testing F7	12	31-May-12	13-Jun-12																		
1011-1910	Pier F7 Dolphin Socketed H-Pile (6 nos.)	42	10-Aug-12	27-Sep-12																		
1011-1864.40	Pier F8 Marine Bored Pile F8-3	3	31-Mar-12 A	23-May-12																		
1011-2115	Marine bored pile testing F8	12	23-May-12	06-Jun-12																		
1011-1806	Pier F9 Marine Bored Pile (Low Headroom)	35	03-Jul-12	11-Aug-12																		
1011-1780	Pier F11 Marine Bored Pile	0	07-May-12 A	18-May-12 A																		
1011-1781	Pier F11 Marine Bored Pile (Low Headroom)	35	21-May-12	30-Jun-12																		
1011-2130	Marine bored pile testing F11	12	03-Jul-12	16-Jul-12																		
1011-1825	Pier F12 Marine Bored Pile	18	21-May-12	09-Jun-12																		
1011-1890.10	Pier F13 Dolphin Socketed H-Pile 1	9	25-Apr-12 A	30-May-12																		
1011-1890.20	Pier F13 Dolphin Socketed H-Pile 2	9	14-May-12 A	30-May-12																		
1011-1890.30	Pier F13 Dolphin Socketed H-Pile 3	7	29-May-12	05-Jun-12																		
1011-1890.40	Pier F13 Dolphin Socketed H-Pile 4	7	02-Jun-12	09-Jun-12																		
1011-1890.50	Pier F13 Dolphin Socketed H-Pile 5	7	07-Jun-12	14-Jun-12																		
1011-1890.60	Pier F13 Dolphin Socketed H-Pile 6	7	12-Jun-12	19-Jun-12																		
1011-1782.10	Pier F14 Dolphin Socketed H-Pile 5	9	02-Apr-12 A	30-May-12																		
1011-1782.20	Pier F14 Dolphin Socketed H-Pile 3	9	07-Apr-12 A	30-May-12																		
1011-1782.30	Pier F14 Dolphin Socketed H-Pile 2	9	14-Apr-12 A	30-May-12																		
1011-1782.40	Pier F14 Dolphin Socketed H-Pile 1	7	25-May-12	01-Jun-12																		
1011-1782.50	Pier F14 Dolphin Socketed H-Pile 4	7	01-Jun-12	08-Jun-12																		

- Remaining Level of Effort
- Actual Level of Effort
- Actual Work
- Remaining Work
- Critical Remaining Work
- ◆ Milestone

**Contract HY/2009/19**

**Three Month Rolling Programme (21 MAY 2012 to 20 AUG 2012)**

3MRP

3MRP - MAY 2012 to AUG 2012



Activity ID	Activity Name	Rem Dur	Start	Finish	2012															
					May					June				July				August		
					23	30	07	14	21	28	04	11	18	25	02	09	16	23	30	06
1011-1782.60	Pier F14 Dolphin Socketed H-Pile 6	7	08-Jun-12	15-Jun-12	Pier F14 Dolphin Socketed H-Pile 6															
<b>Pier F01 to F02</b>																				
1011-2580	Erect Piling Platform pier F1B	0	06-Feb-12 A	03-May-12 A	Erect Piling Platform pier F1B															
1011-2620	Pre-drilling pier F1B	0	04-May-12 A	18-May-12 A	Pre-drilling pier F1B															
1011-2590	Erect Piling Platform pier F1A	14	16-Apr-12 A	05-Jun-12	Erect Piling Platform pier F1A															
1011-2630	Pre-drilling pier F1A	9	06-Jun-12	15-Jun-12	Pre-drilling pier F1A															
1011-2750	Marine bored pile F1A-4	14	16-Jun-12	04-Jul-12	Marine bored pile F1A-4															
1011-2751	Marine bored pile F1A-2	14	05-Jul-12	20-Jul-12	Marine bored pile F1A-2															
1011-2752	Marine bored pile F1A-1	14	21-Jul-12	06-Aug-12	Marine bored pile															
1011-2753	Marine bored pile F1A-3	14	07-Aug-12	22-Aug-12																
1011-2780	Marine bored pile F1B-4	12	19-May-12 A	02-Jun-12	Marine bored pile F1B-4															
1011-2781	Marine bored pile F1B-2	14	04-Jun-12	19-Jun-12	Marine bored pile F1B-2															
1011-2782	Marine bored pile F1B-1	14	20-Jun-12	07-Jul-12	Marine bored pile F1B-1															
1011-2783	Marine bored pile F1B3	14	09-Jul-12	24-Jul-12	Marine bored pile F1B3															
1011-2570	Erect Piling Platform pier F2A	18	05-Apr-12 A	09-Jun-12	Erect Piling Platform pier F2A															
1011-2610	Pre-drilling pier F2A	9	11-Jun-12	20-Jun-12	Pre-drilling pier F2A															
1011-2740	Marine bored pile F2A-4	14	21-Jun-12	09-Jul-12	Marine bored pile F2A-4															
1011-2741	Marine bored pile F2A-2	14	10-Jul-12	25-Jul-12	Marine bored pile F2A-2															
1011-2742	Marine bored pile F2A-1	14	26-Jul-12	10-Aug-12	Marine bore															
1011-2743	Marine bored pile F2A-3	14	11-Aug-12	27-Aug-12																
1011-2770	Marine bored pile F2B-1, F2B-2 and F2B-4	7	28-Mar-12 A	28-May-12	Marine bored pile F2B-1, F2B-2 and F2B-4															
1011-2772	Marine bored pile F2B-3	14	29-May-12	13-Jun-12	Marine bored pile F2B-3															
1011-2790	Marine bored pile testing F1B and F2B	18	25-Jul-12	14-Aug-12	Marine															
<b>10.1.2 - Land Pier Construction</b>																				
<b>Abutment D12</b>																				
1012-1074	Abutment E/B Bridge Bored Pile D12-4	0	18-Apr-12 A	27-Apr-12 A	Abutment E/B Bridge Bored Pile D12-4															
1012-1090	Abutment D12 E/B Bridge Bored Pile Testing	18	21-May-12	09-Jun-12	Abutment D12 E/B Bridge Bored Pile Testing															
1012-1220	Abutment D12 construction (E/B Bridge)	42	11-Jun-12	31-Jul-12	Abutment D12 construction															
<b>Pier D08 to D11</b>																				
1012-1030.05	Complete Relocation of FEHD Hoarding at Portion III	0		04-Jun-12*	◆ Complete Relocation of FEHD Hoarding at Portion III															
1012-1030.10	Pier D08 Bored Pile D8-1	12	04-Jun-12	18-Jun-12	Pier D08 Bored Pile D8-1															
1012-1030.20	Pier D08 Bored Pile D8-6	12	18-Jun-12	04-Jul-12	Pier D08 Bored Pile D8-6															
1012-1030.30	Pier D08 Bored Pile D8-2	12	04-Jul-12	18-Jul-12	Pier D08 Bored Pile D8-2															
1012-1030.40	Pier D08 Bored Pile D8-5	12	18-Jul-12	01-Aug-12	Pier D08 Bored Pile D8-5															
1012-1030.50	Pier D08 Bored Pile D8-3	12	01-Aug-12	15-Aug-12	Pier															
1012-1040.60	Pier D09 Bored Pile D9-6	0	16-Apr-12 A	27-Apr-12 A	Pier D09 Bored Pile D9-6															
1012-1130	Pier D09 Construct Pile Cap	18	21-May-12	09-Jun-12	Pier D09 Construct Pile Cap															
1012-1140	Pier D09 Construct Pier/Column	12	11-Jun-12	25-Jun-12	Pier D09 Construct Pier/Column															
1012-1150	Pier D09 Construct Crosshead	18	26-Jun-12	17-Jul-12	Pier D09 Construct Crosshead															
1012-1050.50	Pier D10 Bored Pile D10-1	0	16-Apr-12 A	27-Apr-12 A	Pier D10 Bored Pile D10-1															
1012-1050.60	Pier D10 Bored Pile D10-4	0	28-Apr-12 A	12-May-12 A	Pier D10 Bored Pile D10-4															
1012-1060.40	Pier D11 Bored Pile D11-6	0	14-Apr-12 A	27-Apr-12 A	Pier D11 Bored Pile D11-6															
1012-1060.50	Pier D11 Bored Pile D11-4	0	28-Apr-12 A	11-May-12 A	Pier D11 Bored Pile D11-4															
1012-1060.60	Pier D11 Bored Pile D11-3	0	07-May-12 A	17-May-12 A	Pier D11 Bored Pile D11-3															

- Remaining Level of Effort
- Actual Level of Effort
- Actual Work
- Remaining Work
- Critical Remaining Work
- ◆ Milestone

**Contract HY/2009/19**

**Three Month Rolling Programme (21 MAY 2012 to 20 AUG 2012)**

3MRP

3MRP - MAY 2012 to AUG 2012

Activity ID	Activity Name	Rem Dur	Start	Finish	2012																								
					May					June				July				August											
					23	30	07	14	21	28	04	11	18	25	02	09	16	23	30	06	13								
1012-1190	Pier D11 Construct Pile Cap	18	11-Jun-12	03-Jul-12																									Pier D11 Construct Pile Cap
1012-1200	Pier D11 Construct Pier/Column	12	04-Jul-12	17-Jul-12																									Pier D11 Construct Pier/Column
1012-1210	Pier D11 Construct Crosshead	18	18-Jul-12	07-Aug-12																									Pier D11 Construct Crosshead
<b>Pier D05 to D07</b>																													
1012-1290.20	Pier D05 Bored Pile D05-1	13	02-Dec-11 A	30-Jul-12																									Pier D05 Bored Pile D05-1
1012-1300	Pier D05/D06/D07 Bored Piles Testing	18	30-Jul-12	20-Aug-12																									Pier D05/D06/D07 Bored Piles Testing
1012-1270	Pier D07 Bored Piles (6 piles)	108	03-Jul-12*	07-Nov-12																									Pier D07 Bored Piles (6 piles)
<b>10.1.3 - E/B Bridge Construction</b>																													
<b>Bridge D3</b>																													
1013-1000.10	Segment and Beam Launching - Procurement of Sub-contractor	14	21-Jan-12 A	05-Jun-12																									Segment and Beam Launching - Procurement of Sub-contractor
1013-1000.20	Segment and Beam Launching - Submit Design Launching Girder	26	14-May-12 A	19-Jun-12																									Segment and Beam Launching - Submit Design Launching Girder
1013-1000.30	Segment and Beam Launching - Approve Design Launching Girder	28	20-Jun-12	24-Jul-12																									Segment and Beam Launching - Approve Design Launching Girder
1013-1010	Segment and Beam Launching - Fabricate & Deliver Launching Girder	98	25-Jul-12	17-Nov-12																									Segment and Beam Launching - Fabricate & Deliver Launching Girder
<b>10.3 - Middle Bridge (Bridge F)</b>																													
<b>10.3.1 - Pier Construction</b>																													
<b>Abutment D12</b>																													
1031-1040	Bored Piles (4 nos) at D12 at III (for F1B1)	47	07-May-12 A	16-Jul-12																									Bored Piles (4 nos) at D12 at III (for F1B1)

- Remaining Level of Effort
- Actual Level of Effort
- Actual Work
- Remaining Work
- Critical Remaining Work
- ◆ Milestone

**Contract HY/2009/19**  
**Three Month Rolling Programme (21 MAY 2012 to 20 AUG 2012)**